



Q'atb'al taj pwi' ri H'iche'Laj
We k'o H'iche'Laj. K'o K'aslemal

Calendario forestal desde los conocimientos
ancestrales y prácticas tradicionales
de los pueblos indígenas

CHOLB'AL CHAK PWI' LE CHE' PA RI NAJTIR TAQ KETA'MAB'AL, KINO'JIB'AL RI AJWARALIK WINAQ

- 3ª edición -



Traducida
en Idioma
K'iche'

Serie Técnica
GT-029(2020)

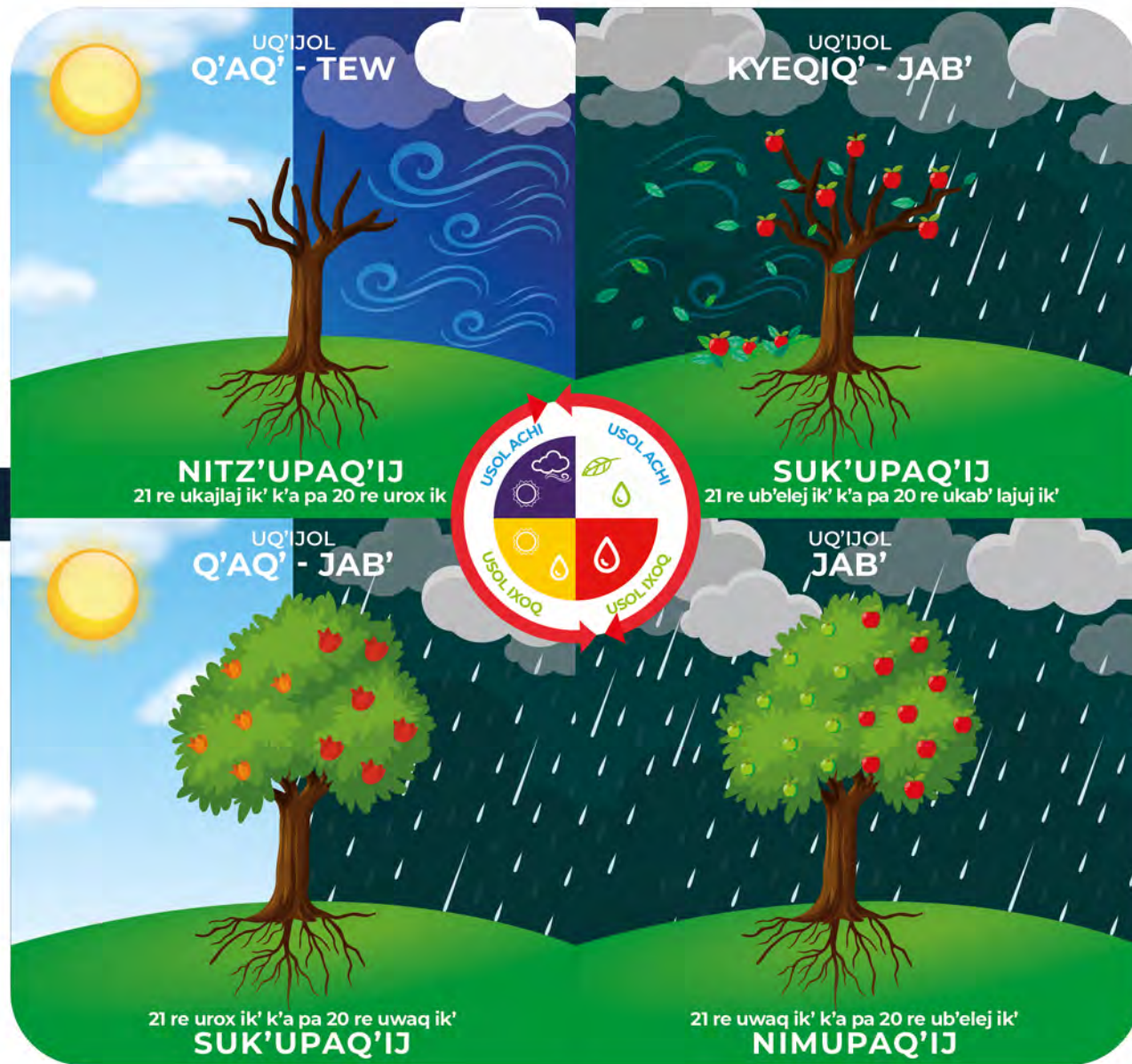




JUN AB' RECH 365 Q'IJ

RI UK'ASLEMAL RI CHE'

UQ'IJOL JUNAB'





Q'atb'al t'ajj pwi' ri K'iche'laj
We h'o H'iche'laj, h'o H'astemal

Q'ATB'AL TZIJ PWI' RI K'ICHE'LAJ
K'AMB'AL B'E PWI' TIKOW CHE'
UQ'AB' YAB'AL UCHUQ'AB' RI TIKOW CHE' PA TAQ K'OLIB'AL

**Calendario forestal desde los conocimientos
ancestrales y prácticas tradicionales
de los pueblos indígenas**

**CHOLB'AL CHAK PWI' LE CHE'
PA RI NAJTIR TAQ KETA'MAB'AL,
KINO'JIB'AL RI AJWARALIK WINAQ**

**Guía del usuario
Yab'al uno'j ri kkojowik**

Xchakux rumal:

LICERIO CAMEY HUZ
AJILONEL PWI' RI RILIK TAQ RI CHE'

Paxil kayala', 2020



Q'atb'al tzij pwi' ri H'iche'laj
We H'o H'iche'laj, H'o H'aslemal

Chikob'al rech ri Q'atb'al tzij pwi' ri K'iche'laj (INAB)
7a avenida 12-90 zona 13
Paxik Kayala', Paxik Kayala', Uk'u'x Abya'yala
www.inab.gob.gt

K'amb'al B'e pwi' Tikow che'
7a avenida 6-80 zona 13
Paxik Kayala', Paxik Kayala', Uk'u'x Abya'yala

Uq'ab' Yab'al Uchuq'ab' ri Tikow Che' pa taq K'olib'al
7a avenida 6-80 zona 13
Paxik Kayala', Paxik Kayala', Uk'u'x Abya'yala
Ch'ab'eb'al: 2321-4600 y 2321-4601

Ya'talik kachicox uwach ronojel, wine' xa ch'aq'a'p chech wa' we wuj ri' we chech we chech tijob'al kokisax wi, man ch'ekb'al ta pwaq, man kajawataj tan a katay che ri ajchoq'e, xaqxuche ri rajawaxik kab'ixik chi chi ri' xesax wi.

Ajk'iyisanel:

Licerio Camey Huz

E'ajno'j:

Tat Felix Sarazua – Sotz'il

Tat Donato Camey

Q'axanel pa k'iche' tzij:

Obispo Rosales Yax

Ajb'itonel, ajwachinel:

Ajya'l b'ixikil rech INAB

Ri upetik wi ri uwachib'al tz'ib': *Ajil MayaWuj*

Editorial Maya'Wuj 1998

Ri uq'axaxik wa' we wuj ri' xa malyox chech ri:

Ri uchikoxik wa' we wuj ri', xa malyox ceh ri utob'anik ri:



CHOLUPAM

Pág.

OKIB'AL5 —

YAB'AL NO'J CHE USIK'IXIK WE CHOB'AL CHAK6 —

NAB'E TANAJ

1. UYA'IK UB'IXIK RI USOL LE CHE' UK'EXB'AL RI Q'IJ, UQ'IJOL, UQ'IJOL JUNAB' XUQUJE' UKEXB'AL RIB' LE IK', PA RI KETA'MAB'AL RI AJWARAKIK WINAQ.....7 —

UKAB' TANAJ

2. RI CHAK RECH TAQ RI TIKOW CHE' XUQUJE' RI UCHOLB'AL Q'IJ JACHA' KINO'JIB'AL RI AJWARALIK WINAQ9 —

◊ Nab'e taq chak.....9 —

• Ucha'ik ija'9 —

• Ucha'ik jotoy9 —

• Uchaqi'jarisaxik ija'10 =

• Utikik ija' (ija'b'al)10 =

• Rilik ri utz'ukik ri ija' pa ri tikb'al11 —

• Utikik ri alaj che' k'o pa ija'b'al, k'a pa tikb'al11 —

◊ Chak re ri nab'e junab'12 —

• Uk'isb'al ujosq'ixik ulew12 —

• Ujuch'ik xuquje' ub'anik jul12 —

• Utikik che', wine uq'axaxik pa ri tikb'al re che'13 —

• Ujoxk'imixik le uxe' che'14 —

◊ Chak re ukab' junab'14 —

• Ukamulixik utikik rumal man xk'iy taj14 —

◊ Chak pwi' taq uk'iyik ri che' xuquje' ri uchajixik pa ri no'jib'al15 —

• Ub'anik, rilixik alaj taq q'ateb'al rech q'aq'15 —

• Kilik taq le awaj (kesaxik are taq k'a esaqmo'l, wine' erecha'q na)15 —

• Ujosq'ixik ri che' chikech ri Itzel taq q'ayes, Itzel taq awaj16 —

• Uchoyik taq ri q'ayes (kesax konojel taq ri Itzel q'ayes)16 —

• Unak'tikik ri che' (nojib'al pwi' le utikik taq le che')16 —

◊ Chak pwi' le tikow che'17 —

• Ujotoyixik, usi'jaxik ri eyawab' taq che'17 —

• Ujotoyixik rech utz kapetik17 —

• Ujotoyixik rech utz kk'iyik18 —

• Usi'jaxik (chech aqan xuquje' chech si')18 —

◊ Utz ukojik ri che'19 —

• Utz ukojik chech tz'alam xuquje' chech che'19 —

◊ Alaj saq'ij19 —

ROX TANAJ

3. WUJ SOLIXIK20 —



Q'atb'al tajj pwi' ri K'iche'laj
We k'o K'iche'laj, k'o k'aslemal

Ajk'amal ub'e ri ri Q'atb'al Tzij pwi' ri K'iche'laj

Ministerio de Agricultura, Ganadería y Alimentación

José Angel López Camposeco
Manuel Benedicto Lucas López

Ministerio de Finanzas Públicas

Violeta María Mazariegos Zetina
Edwin Oswaldo Martínez Cameros

Asociación Nacional de Municipalidades

Eduardo Moll Santacruz
Julio Baldomero Asig Isem

Escuela Nacional Central de Agricultura

Federico Guillermo Alvarado González
Luis Eduardo Mendoza Soto

Cámara de Industria, Gremial Forestal

Roberto Andrés Bosch Figueredo
Fernando Alcides Enríquez Flores

Asociación Nacional de Organizaciones NO Gubernamentales de los Recursos Naturales y el Medio Ambiente

Miriam Elena Monterroso Bonilla
Carmen Raquel Torselli Bech

Universidades

Raul Estuardo Maas Ibarra
Mirna Lucrecia Vela Armas

Instituto Nacional de Bosques

Rony Estuardo Granados Mérida

OKIB'AL

Che taq we q'ij kujriqitajik, ri Organización de las Naciones Unidas –ONU-¹, kub'ij chi ri ajwaralik winaq sib'alaj ek'i cho we uwach ulew: wene' ek'o kab'lajq'o' lajk'al komon winaq pa jumuch' lajuj tinimital, jawje' ri winaq k'o wi kich'abal ri kumol rib' wuqlajq'o' lajk'al chi uwach ri ulew.

Ri ajwaralik winaq kilim kiya'om uk'aslemaal xuquje' kkikoj na ri jalajoj taq uwach k'aslemaal kik'iyisam najtir ojer. Ri uwach kik'aslemaal are tajin katob'an che uchajixik ri k'iche'laj kariqitaj kamik, chi uwach ri itzel taq k'ax kb'an che taq we q'ij, jacha' kub'ij ri "kimoloj ri ajwaralik winaq re ri amazonía, américa central ruk' ri cuenca del congo e indonesia"², kakichajij nimaq taq k'iche'laj (400 millones de hectáreas) pa ri uwach ulew, ri kitob'anik sib'alaj nim ub'antajik che ri uchajixik le k'iche'laj kariqitaj kamik, xuquje' rajawaxik che le k'aslemaal cho we uwachulew.

K'o jun che ri xaq junam kitzij ri winaq ri ajtzukunelab' pwi' taq wa' we ri' are che ri kkib'ij chi ronojel ri kariqitaj cho ri uwachulew ruk'a'm rib' ruk' ri ronojel ri kino'jib'al taq, wa' we ri' chi rik'a'm loq rib' najtir ojer ruk' taq ri rik'owib'al ri q'ij rumal taq ri kik'iyem ri keriqitaj cho uwach ulew ruk' ri kikib'an ri winaq (...) are puch karaj kib'ixik chi ronojel uwach ri kariqitaj cho uwach ulew "ri k'iyinaq utukel" are qas tzij chi uwach ronojel ri kib'anom che rilik ri ajwaralik winaq, ri ajtikol taq ulew (Ibargüen y Chapela, 2006; p.299).

Ri q'atb'al tzij ri kilow ronojel ri k'iche'laj, INAB, kab'ix chech pa utzij mu's kuloq'aj ri kichomab'al le ajwaralik winaq, xa' rumal chi kajawatajik che uchajixik ri k'iche'laj, jacha' ri kub'ij jun chike ri urayib'al ri taqanik re urilik uchajixik taq k'iche'laj re we tinimit Paxil kayala'.

Ri cholb'al chak pwi' tikow che' xchakux jacha' ri keta'mab'al ri ajwaralik winaq xuquje' are' wa' jun chakonsa'n ktob'an che uchakuxik ri utzalaj rilik ukojik ri k'iche'laj.

Chi upam ri INAB, sib'alaj kaya' uchuq'ab' ri chak pwi' ri kilik, kita'ik ri ajwaralik winaq, che rilik utikik taq ri che', je jacha' b'italik chuquje' kaya' b'e chech ri krog'ob'ej uk'u'x 1.1: "ri utzukukuxik, xuquje' utz'ib'axik ronojel ri keta'mab'al ri ajwaralik winaq pwi' ri uk'olik, uchajixik, rilik xuquje' ukojik ri k'iche'laj ri man kub'an ta k'ax chkech ri winaq, xuquje' chikech konojel ri ejalajoj taq ek'aslik cho ri uwachulew ri keriqitaj pa ri qamaq', rech ronojel wa' we eta'mab'al ri' kaya unim chupan ronojel taq ri ub'e'al chak kab'an pwi' ri tikow che' sib'alaj nim katob'an wi' pa ri wokaj.

Chi pa ri junab' 2014, ri INAB ub'anom jo'lajuj chak kuk' taq komon re we amaq', chila' xtzukux wi ri keta'mab'al ri eqati't qamam pa uwi' ri rilik uchajixik ri k'iche'laj. Xuquje' xb'an wuqlajuj chak kuk' taq komon xuquje' taq wokaj, jawje' xya' ub'ixik utzijoxik wa' we eta'mabal kech taq ri eqati't qamam, ri keto' rumal ri uq'ab cha re uya'ik uchuq'ab' ri tikow che' chikech ri k'o k'i taq nitz' kik'iche'laj, rech ne tikb'al che' kya' uwach, kab'ix –PINPEP- chech pa kaxla'n tzij, xek'oji' jo'lajk'al oxlajuj winaq pa taq we chak ri', wa' we ewinaq epetinaq pa taq komon re Awakateko, Chalchiteko, Ixil, Kaqchikel, K'iche', Mam, Q'anjob'al, Q'eqchi', Sakapulteko, Tz'utujil, Xinka xuquje' Español. Xb'an job' chakunem kuk' ri ajchakib' re ri wokaj INAB pwi' ri ketmab'al ri ajwaralik winaq cho ri urilik uchajixik ri taq k'iche'laj.

Ri cholb'al chak pwi' tikow che' xuquje' ri uq'ijil ukojik we cholb'al ri', kuya' ub'ixik ri uwach ilonem kka'n ri ajwaralik winaq che ri uwach ulew, ri uk'exb'al ri q'ij, ri nitz'upaq'ij, nimupaq'ij, suk'upaq'ij xuquje' suk'upaq'ij, ri uq'ijol ri junab': chaq'ij ruk' q'alaj, ri uq'ijol: ch'aqalik, kyeqiq', q'aq' xuquje' tew, ri usol uk'aslemaal le che' pa jun junab': usol achi, usol ixoq, ri uk'exb'al rib' le ik' re juwinaq wajxaqib' q'ij, ri ktob'an che ucholik ri juwinaq jun chak rajawaxik kb'anik, jacha' kub'ij we cholb'al chak.

Ri cholb'al chak jun wa' che ri riqom pwi' taq ri chak kuk' taq ri winaq pa taq ri kino'jib'al, rumal chi eta'manaq chi kariqitaj najtir taq eta'mab'al kech ri ajwaralik winaq, ri ketob'an che uchajixik, ri utzalaj rilik ukojik ri k'iche'laj xuquje' ri jalajoj taq uwach k'aslemaal.

1 Xe'saxuloq pa <http://www.un.org/es/events/indigenousanday/index.shtml>, consultado el 1 de agosto de 2016.

2 Xe'saxuloq pa <https://unfccc.int/es/news/proteccion-de-400-millones-de-hectareas-de-bosques-por-los-pueblos-indigenas>, consultado el 1 de marzo de 2018.

YAB'AL NO'J CHECH USIK'IXIK WE CHOLB'AL CHAK

Ronojel ri k'o chupam we cholb'al chak pwi' tikow che', je' wa' kb'an che usik'ixik: ksik'ix nab'e ri jun q'at xulanik (columna) kariqitaj pa mox, are taq kariqitaj ri chak, ri cholaj kuk'ut ri cholupam, we qas are jun chike ri juwinaq jun chak pwi' tikow che', ri "X" kub'ij ri chak rajawaxik kb'anik, pa ri ucholajil ri uk'exb'al rib' le ik', ri ik', ri uq'ijol ri junab', ri usol uk'aslemal le che' xuquje' ri uk'exb'al ri q'ij.

1. Ri cholb'al chak re jun junab' pwi' ri urilik ri tikow che' kab'an pa taq kaj ik', are ri nab'e b'ixkil kariqitaj pa ri cholb'al chak pwi' tikow che'.
2. Ri **nitz'upaq'ij**, **nimupaq'ij**, **suk'upaq'ij**, **suk'upaq'ij**, **xuquje' ri usol uk'aslemal le che'**, kijachom kib' chi oxib' ik', che taq wa' we q'ij ri' kariqitaj ri usol uk'aslemal le che', ri **ixoq xuquje' achi**, are wa' junam kichak ruk' ri uk'exb'al ri q'ij.
 - a. Ri nab'e uk'exb'al ri q'ij are' ri **Suk'upaq'ij**, kmajataj pa ri 21 re ri urox ik' k'a pa 20 re ri uwaq ik' (oxib' ik'), ri che' kumajij ri **usol ixoq**, prumal chi che taq wa' we q'ij ri' kek'iy ri ukotz'ijal.
 - b. K'ate' k'u ri' kape ri ukab' uk'exb'al ri Q'ij, ri **Nimupaq'ij**, kamajtaj pa ri 21 re uwaq ik' k'a pa 20 re ub'elej ik' (oxib' ik'), ri che' kuriqa' ri ukaq'at rech ri **usol ixoq**, rumal chi chech taq wa' we q'ij ri' kechaq'aj ri uwach, xaq je ri' nojimal kape uchaq'ajal, kel chi ri k'arax kopan pa ri q'anq'oj.
 - c. K'ate' k'u ri' kape ri **Suk'upaq'ij**, kamajtaj pa ri 21 re ri ub'elej ik' k'a pa 20 re ukab'lajuj ik' (oxib' ik'), ri che' kumajij ri **usol achi**, che taq wa' we q'ij ri' kak'is uchaq'ajik ri uwach, ketzaq loq rech

kapoq' chi jun mul chik, xaq je la' kuya'o kcha'ik ri ija'.

- d. Chi uk'isb'al kape ri **Nitz'upaq'ij**, kmajtaj pa ri 21 re ukab'lajuj ik' k'a pa 20 re urox ik' (oxib' ik'), pa taq wa' we q'ij ri', kumajij ri ukaq'at **usol achi**, ele che', k'o jujun taq che' ketzaq loq ri kixaq rech kapoq' chi jun mul, xaq je la' kakito' kib' chi uwach ri k'ax tew, chech ne jun uwach uk'exb'al ri meq'inal ulew. Ri nima'q taq che' kariqitaj che taq wa' we q'ij ri', kuya'o kkoj che taq tz'alam, wene' che si'.
3. Ri uq'ijol le junab': **Chaq'ij**, **Q'alaj**, jun b'ixkil sib'alaj kajawatajik rumal ri taq uwach q'ijol kaya'taj pa le amaq Paxil Kayala', xuquje' rumal chi kakik'ut ri q'ij rech tiko'n xuquje' rech uyakik uwach.
 4. Ri chaq'ijal kujach rib' pa oxib' q'ijol: **tew**, **q'aq'**, **kyeqiq'**. Are taq k'o ri jab', are ri uq'ijol ch'aqalik. Wa' we uq'ijol ri' sib'alaj rajawaxik che taq ri chak re tikow ichaj xuquje' rech tikow che'. Ri q'ijol kakik'ut; ri ukotz'ijalil, uchaq'ajik uwach, uyakik ija' xuquje' ri utz ukojik le ri'j taq che', necher xuquje' jujun taq uwach chak kb'anik chi junamal ruk' ri uk'exb'al rib' le ik'.
 5. Uk'utik ri ik' rech jun junab' sib'alaj rajawaxik che le cholb'al chak pwi' tikow che, rumal chi kuk'a'm kib' ruk' ri kaxla'n cholb'al q'ij.
 6. Ri uk'utik ri **uq'ijol rech le jujun taq uwach k'exb'al rib' le ik'**, sib'alaj rajawaxik rech keta'maxik jas taq q'ij qas nim ri uchuq'ab'il ri ik', wa' kajawataj che uchakuxik ri tikow che' ri kub'ij le cholb'al chak.
 7. Ri uk'exb'al rib' le ik': ne'ik', ak'ala'ik', nima'ik', rija'ik', ri wuj kub'ij jas uwach chak rajawaxik kb'anik are taq k'o jun uwach uk'exb'al rib' le ik'.



1. UYA'IK UB'IXIK RI USOL LE CHE', UK'EXB'AL RI Q'IJ, UQ'IJOL, UQ'IJOL JUNAB' XUQUJE' UK'EXB'AL RIB' LE IK', CHI PA RI KETA'MAB'AL RI AJWARALIK WINAQ

Ri cholb'al chak pwi' tikow che' xb'an uchakuxik pa ri keta'mab'al ri ajwaralik winaq re Paxil Kayala', jawje' ri k'aslemal ilom chi pa ri usol, xuquje' xk'am uwach ri uwach ilonem kka'n che ri uwachulew ruk' ri uwach kaslemal kkik'am b'ik kuk' ri jalajoj taq uwach k'aslemal kariq'itaj pa qanan ulew.

Rumal ri urilik le uwachulew, ri qati't qamam xkib'an ri utz taq cholb'al q'ij, xkicholo, xkiyako xuquje' xkik'ut jun b'e re k'aslemal pa we uwachulew, rumal la': kariqitaj nima'q taq tz'aq, ri taq ja xkikoj che urilik ri uwach ulew, jawje' xkitz'ib'aj wi ri uk'exb'al le q'ij: Suk'upaq'ij, nimupaq'ij, q'eq qij xuquje' suk'upaq'ij, xuquje' xketa'maj ri kisol kik'aslemal le che', usol ixoq xuquje' usol achi.

Chi pa taq kiq'ijol ri eqati't qamam, k'a pa taq wa' we q'ij kamik, kkoj ri urajilaxik ri q'ijilal, rech ucholik kichak kkib'an pa ri uwachulew, xuquje' ri k'amow rib' rech ri winaq kuk' ri rixlab' ri kaj ulew.

Rumal ri ilonem xuquje' ri uch'ikik ri q'ij xkib'ano, xkijach ri uq'ijol ri jab' ruk' ri chaq'ijal: kyeqiq', tew, q'aaq', rumal wa' qas je' xka'n che ri taq kicholb'al q'ij, wa' we ri' kkikoj che urilik ri q'ij qas utz che tiko'n, ri uk'exb'alil ri uwachulew xuquje' ri uchak ri ik' pwi' ri jalajoj taq uwach k'aslemal kariqitaj pa ri uwachulew.

Ri uch'ob'ik ri uk'exb'al rib' le ik' sib'alaj nim chak xkib'a'n ri eqati't qamam, rumal wa' xya' b'e che

uch'ob'ik ri uk'exb'al ri q'ij, are taq ri kichuq'ab'il ri taq che' kanimarik, kanitz'arik ne', xuquje' che uch'ob'ik jas taq q'ij qas utz ukojik ri che' che si', che ne jujun taq rajawaxik chik.

Ri usol ixoq ri che', are ri taq q'ij kuxlanik, rumal chi ri che' kutz'aqatisaj ri upoq'ik, che taq wa' we q'ij ri', ri che' kkoz't'ij'janik xuquje' kuya' uwach, rumal wa' kuya' kapoq'ik, k'ate' k'u ri' kak'iy chi jun mul.

Ri usol achi kutz'aqatisaj ri usol ixoq, che taq wa' we q'ij ri' kb'an ri jalajoj taq uwach chak pwi' tikow che', rumal chi che taq we q'ij kewachinik, ri ija' kcha'ik xuquje' kab'an jun utzalaj ukojik ri che'.

Ri rilik ri uq'ijol ri junab' pa Paxil Kayala' keb' uwach, saq'ij xuquje' q'alaj. Ri saq'ij kujach rib' chi oxib' uq'ijol: kyeqiq', tew, q'aaq'. Ri q'alaj are taq kqaj ri jab' xuquje' che taq wa' we q'ij ri' kariqitaj ri ch'aqalikal.

Ri uq'ijol ri junab' kakib'ij jas chak kb'anik, jacha' ta ne': ucha'ik, utikik ri ija', uq'axaxik ri laj che', xuquje' ri uchajixik utikik taq ri che'.

Ri ajwaralik winaq xkil ri uchak ri ik' pwi' ri jalajoj taq uwach k'aslemal k'o pa ri uwach ulew. Ri tata' Jairo Restrepo, je' wa' kujach wi ri eta'mab'al:

- Ne'ik'; jun q'ijol jawje' ri uch'uq'ab'il ri che' kariqitaj pa ri uxe' ra' "... Ri ne'ik' are' wa' jun q'ijol jawje' ronojel kujosq'ij rib'". (Restrepo, 2013; p. 82). Are' wa' we taq q'ij ri', ri che'

kuxlanik rumal chi nitz' q'ij kuriqo, rumal wa' no'jimal kk'iyik.

- Ak'ala'ik'; jun q'ijol jawje' ri uwa'l ri che' kanimarik xuquje' kariqitaj pa ri uch'ek ruk' ri uq'ab' "... ri ak'ala'ik' are(...) kuk'am b'ik, kuk'y'aq b'ik, kuk'amo, kuk'olo, kujik'o ronojel ri kaya'ow uchuq'ab', kuta' ri uchajixik xuquje kukunaj ri che'." (Ibíd. p. 71).
- Ri nima'ik': jun q'ijol jawje' ri uwa'l ri che' xa kapaqi'k no'jimal kak'oji' pa ri uq'ab', uxaq, ukotz'i'jal xuquje' pa ri uwach ri che';

"...ri utun ri ik' seb'alaj nim ri utib'anik che ri uk'aslemal ri winaq xuquje' chikech taq ronojel ri tiko'n. ..Ri utun ri ik' sib'alaj nim ri uob'anik kuya chikech rech kepoq' konojel uwach taq ija'l, are taq k'i taq nitz' ri utun no'jimal kok b'i k'a chupam taq ri ija', man junam ta ruk' ri utun ri q'ij che ri man man kopan taj k'a jawje' kopan wi ri rech ri ik', qas k'a pa usakilal... Ri uchak ri utun ri ik' chech uk'asuxik sib'alaj nim, sib'alaj utz rech qas je'l kepoq'ij, sib'alaj k'o kichuq'ab'. ... jujun chik chech ri katob' wi le ik' (rija'ik')

rech qas kuya' uchuq'ab' ri tiko'n, qas utz upetik kapetik, are kariqataj wa' are taq ak'al le ik', kopan pa (ri rija'ik') (...) wa' we k'ulmatajem ri' b'im chi xa rumal rech ronojel ri uchuq'ab'il ri kuya' ri utun ri iko chech ronojel ri uwach ulew. ...(xuquje') ri utuk ri ik' (nima'ik') chikech ri tiko'n kuchomaj chi, pune ta ne xa panik'aj, man che ri utun ri ik' sib'alaj katob'an chech kikowirik kichaq'ajik, kinaq' ri xim, xuquje' ronojel ri uwach taq ri che'" (ibíd.).

- Ri rija'ik'; jun uq'ijol wa' jawaje' ri uwa'l le che' kqaj pa ri uch'ek xuquje' ri uq'ab' "... are' wa' ri uk'exb'al ri ik' ri kuq'alajisaj, kuchaqi'jirisaj, kresaj pa ja', rech kuya b'e chech ri ukojik ri uchuq'ab'". (Ibíd.).



2. RI CHAK RECH TAQ TIKOW CHE' XUQUJE' RI UCHOLB'AL Q'IJ JACHA' KINOJIB'AL RI AJWARALIK WINAQ

◇ NAB'E TAQ CHAK

• UCHA'IK IJA':

CHAKUNEM CHIRIJ TAQ LE CHE'	KAJ IK'	UK'EXB'AL LE Q'IJ	USOL UK'ASLEMAL LE CHE'	UQ'UJOL LE JUNAB'	UQ'UJOL	IK' RE LE JUNAB'	UK'EXB'AL RIB' LE IK'
Ucha'ik ija'	Nab'e xuquje' ri urox	Nitz'upaq'ij: (21 re ukab'laj ik' k'a pa 20 rech ri urox ik')	Achi le che'	Saq'ij	- Tew - Q'aq'	Nab'e, ukab', urox xuquje' ukab'laj ik'	Nima'ik'

Ri ucha'ik ija' rajawaxik kab'an pa ri nab'e, ukab', urox, xuquje' ukab'laj ik' re jun junab', rumal chi k'o tew xuquje' q'aq'. Pa taq we q'ij ri', le che' k'o pa ri usol achi, xuquje' ri ucha'ik ija' rajawaxik kb'anik are taq k'o ri nima'ik'. Ri uchak ri nima'ik' chikech le che' are la' are taq kuk'am b'i le uwa'l, le uchuq'ab' pa taq le uq'ab', pa taq le uxaq,

pa taq le uwach taq le che' xaq k'u je ri' kuya' uchuq'ab' ri ija'. Ri taq ija' echa'om pa taq we q'ij ri' k'o sib'alaj kichuq'ab', rumal k'u la' kekwinik kakito' kib' chikiwach ri taq chikop, xuquje' sib'alaj nim kichuq'ab' che kik'iyem, nik'aj taq jastaq chik.

• UCHA'IK JOTOY:

CHAK PWI' TIKOW CHE'	KAJ IK'	UK'EXB'AL LE Q'IJ	USOL UK'ASLEMAL LE CHE'	UQ'UJOL LE JUNAB'	UQ'UJOL	IK' RE LE JUNAB'	UK'EXB'AL RIB' LE IK'
Ucha'ik jotoy	Nab'e xuquje' ri urox	Nitz'upaq'ij: (21 re ukab'laj ik' k'a pa 20 rech ri urox ik'. Suk'upaq'ij: (21 re ub'elej ik' k'a pa 20 re ukab'laj ik')	Achi le che'	Saq'ij	- Kyeqiq' - Tew	Nab'e, ukab', uju'laj xuquje' ukab'laj ik'	Ak'ala'ik'

Ri jotoy kuya' katzukux pa ri nab'e, ukab', uju'laj xuquje' ukab'laj ik' rech ri junab', pa ri usol achi ri che', rumal chi rajawaxik kaye'x na ri uwach le che', xuquje' are taq maja' kak'iy ri ukotz'i'jal xuquje' ri uxaq. Pa taq ri uju'laj ruk' ri ukab'laj ik' re le junab', maja' kak'iy ri ukotz'i'jal le che', xuquje' pa taq ri q'ij ri' sib'alaj utz che le chak, rumal chi k'o kyeqiq' xuquje' tew.

kakib'ano are taq k'o ri ak'ala'ik', kakimub'a' oxib' q'ij, neche ri k'o jujun taq che' rajawaxik kya' jo'lajuj q'ij cho le q'ij, rech qas utz kub'ano are taq ktikik, xa' rumal chi wa' we chak ri' ktob'an che ukunaxik le jotoy.

Ri uk'exb'al rib' le ik' qas utz che ucha'ik ri jotoy xuquje' rech kpoq'isax uwach are' ri ak'ala'ik', xa rumal chi kak'iy ri uchuq'ab'il ri tiko'n, xuquje' ri uwa'l ri tiko'n, are taq kaqupixik, ktob'an rech utz kub'ano are taq ktik pa ri ulew. Pa taq jujun komon kech ri ajwaralik winaq, ri ucha'ik ri jotoy

Jacha' kub'ij Restrepo, "... sib'alaj oqxa'nim chi kab'an we taq chak (...) are taq k'o ri ak'ala'ik', xa rumal chi pa taq we q'ij kpoq' ri uk'otz'i'jal ri che..." (Restrepo, 2013; p. 83).

• **UCHAQI'JARISAXIK IJA':**

CHAK PWI' TIKOW CHE'	KAJ IK'	UK'EXB'AL LE Q'IJ	USOL UK'ASLEMAL LE CHE'	UQ'IJOL LE JUNAB'	UQ'IJOL	IK' RE LE JUNAB'	UK'EXB'AL RIB' LE IK'
Uchaqi'jarisaxik ija'	1 xuquje' 3	Nitz'upaq'ij: (21 re ukab'laj ik' k'a pa 20 rech ri urox ik') Suk'upaq'ij: (21 re urox ik' k'a pa 20 re uwaq ik')	Achi xuquje' ixoq le che'	Saq'ij	- Tew - Q'aq'	Nab'e, ukab', urox, ukaj xuquje' ukab'laj ik'	Rija'ik'

Ri uchaqi'jarisaxik ija' rajawaxik kb'an pa ri nab'e, ukab', urox, ukaj xuquje' ukab'laj ik', rumal chi k'o tew xuquje' q'aq'. Pa taq ri q'ij ri', ri che' kariqitaj pa ri usol achi, xuquje' ri uchaqi'jarisaxik ija' kab'anik are taq k'o ri rija'ik'. Pa taq ri komon kech ri ajwaralik winaq, ri uchaqi'jarisaxik ija', je' wa kb'anik: chuxe' ri q'ij wine' chupam jun ja. Are taq kachaqi'jarisax ri ija' chi junamal ri uk'exb'alil ri ik' xuquje' ri q'ij, ktob'an che ri ija'

rech man kutzaq ta ri uchuq'ab', rumal k'u wa' qas utz kak'iyik. Are taq kb'an ri ucha'ik ri ija' pa nima'ik', are taq kuxlan oxib' q'ij ri ija', are wa' qas utz kub'ano rumal chi ri uk'exb'al ik' kapetik are ri rija'ik'.

• **UTIKIK IJA' (IJA'B'AL):**

CHAK PWI' TIKOW CHE'	KAJ IK'	UK'EXB'AL LE Q'IJ	USOL UK'ASLEMAL LE CHE'	UQ'IJOL LE JUNAB'	UQ'IJOL	IK' RE LE JUNAB'	UK'EXB'AL RIB' LE IK'
Utikik ija' (Ija'b'al)	Nab'e xuquje' ri urox	Nitz'upaq'ij: (21 re ukab'laj ik' k'a pa 20 rech ri urox ik')	Achi le che'	Saq'ij	- Tew	Nab'e, ukab' xuquje' ukab'laj ik'	Nima'ik'

Ri utikik ija' rajawaxik kb'an pa taq ri nab'e, ukab' xuquje' ukab'laj ik' re ri junab', rumal chi pa taq we q'ij kariqitaj ri tew. Ri che' che taq wa' we q'ij ri' kariqitaj pa ri usol achi. Ri usol re tew ruk' ri nima'ik' ketob'an che ri ija' rech qas utz upoq'ik kub'ano. Uja'xik ri ija' ktob'an che jun utzalaj upoq'otajik ri ija'. Ri ucha'ik ri ija' ruk'a'm loq rib' ruk' ri karitqitaj ri ik', ri ucha'ik ri ija' rajawaxik wa'

xb'anik are taq k'o ri nima'ik', ri uchaqi'jarisaxik, uk'olik xuquje' ri uraye'xik ri uk'exb'alil ri ik' re tiko'n, ri chuq'ab'il kk'oji' chupam ri ija', ronojel ri uch'uq'abil kuk'ol rib' rech qas utz upoq'otajik, uk'iyik, xuquje' ri ija' man kaq'ay taj, qas q'alaj chi k'o ri uchuq'ab' cho ri ch'aqalik ulew xuquje' chikiwach ri itzel taq chikop.

- **RILIK RI UTZ'UKIK RI IJA' PA RI TIKB'AL:**

CHAK PWI' TIKOW CHE'	KAJ IK'	UK'EXB'AL LE Q'UJ	USOL UK'ASLEMAL LE CHE'	UQ'UJOL LE JUNAB'	UQ'UJOL	IK' RE LE JUNAB'	UK'EXB'AL RIB' LE IK'
Rilik ri utz'ukik ri ija' pa ri tikb'al	Nab'e xuquje' ri ukab'	Nitz'upaq'ij: (21 re ukab'laj ik' k'a pa 20 rech ri urox ik') Suk'upaq'ij: (21 re urox ik' k'a pa 20 re uwaq ik')	Achi xuquje' ixoq le che'	Saq'ij xuquje' q'alaj	- Tew - Q'aaq'	Nab'e, ukab', urox, ukaj xuquje' uro' ik'	Ak'ala'ik', nima'ik' xuquje' rija'ik'

Ri urilik ri utz'ukik ri ija' pa ri tikb'al, (jun chak kb'anik are taq xtik ri ija' pa jun uk'olib'al, karaj ne' jun b'orxa, jun b'o'j, jun jas chi ne'), wa' we chak ri' kb'an pa ri nab'e, ukab', urox, ukaj, uro' ik' re jun junab', rumal chi kariqitaj ri tew rachi'l ri q'aaq', rumal che ri le che' k'o pa ri usol achi xuquje' pa jub'iq' re ixoq.

Ri uk'exb'al ri ik' jacha' ri ak'ala'ik', nima'ik', xuquje' rija'ik' ketob'an che rech aninaqil ketz'ukik ri che', neche ri rajawaxik resaxik ri itzel taq q'ayes pa ri tikb'al rech qas utz uk'iyem ri che' kub'an pa taq ri tikb'al.

Are taq kk'is ri jab', rajawaxik k'o jun uwach chakonsa'n kuja'j ri che'. Ronojel we chak rajawaxik kb'anik are taq ak'ala'ik' xuquje' nima'ik', rumal che ri pa taq wa' we q'ij ri' ri uchuq'ab' ri che' kariqitaj ajsik chech.

Ronojel wa' we chak ri' re urilik ri utz'ukik ri ija' pa ri tikb'al kb'anik ruk' ri kajb'al kkoj che uchakuxik, are' rumal raye'xik ri jab' xuquje' che uk'exik ri uk'olib'al le che', ri kariqitaj pa jun k'olib'al kaq'axax pa ri tiko'nijab'al.

Ri tata' Jairo Restrepo, kuya' ub'ixik chi ri chak pwi' taq ri che' re uq'axaxik ri ija' pa uk'olib'al, xuquje' ri utz'ukik ri ija', rajawaxik kb'an are taq kk'is ri ne'ik xuquje' pa ri umajb'al ri ak'ala'ik'. Kub'ij chi ilom chi are taq kajos jub'iq' ri ija' (kjos ri jun chaq'ij rij ri ija') xuquje' are taq kmu'b'ax pa taq kunab'al chuq'ab'il, pa taq ri ab'aj, pa taq ri chak, ri taq che' kakik'am b'ik jun utzalaj kik'iyem. (Restrepo, 2013: p.93).

- **UTIKIK RI ALAJ CHE' K'O PA IJA'B'AL K'A PA TIKB'AL:**

CHAK PWI' TIKOW CHE'	KAJ IK'	UK'EXB'AL LE Q'UJ	USOL UK'ASLEMAL LE CHE'	UQ'UJOL LE JUNAB'	UQ'UJOL	IK' RE LE JUNAB'	UK'EXB'AL RIB' LE IK'
Utikik ri alaj che' k'o pa ijab'al k'a pa tikb'al	Nab'e xuquje' ri urox	Nitz'upaq'ij: (21 re ukab'laj ik' k'a pa 20 rech ri urox ik') Suk'upaq'ij: (21 re ub'elej ik' k'a pa 20 re ukab'laj ik')	Achi le che'	Q'alaj	- Kyeqiq' - Tew	Nab'e, ukab', ulaj, uju'laj xuquje' ukab'laj ik'	Ne'ik' xuquje' ak'ala'ik'

Are taq xb'antaj ri chak re ucha'ik xuquje' utikik ri ija', kape le chak re uq'axaxik ri alaj che' ri k'o

pa ija'b'al k'a pa ri tikb'al, karaj ne' pa ri b'orxa, ri b'o'j, nik'aj taq tikb'al chik jaw ri kk'am wi ub'ik,

wa' we chak ri' kb'an pa taq ri nab'e, ukab', ulaj, uju'laj xuquje' ukab'laj ik' rech jun junab'. Pa taq wa' we q'ij ri' kariqitaj ri tew xuquje' kyeqiq'. Che taq wa' we q'ij ri' kariqitaj pa ri usol achi le che'. Ri uk'exb'alil ri ik' gas utz kub'an che ri uq'axaxik ri laj che' pa ri tiko'nijab'al are' gas utz are taq ne'ik xuquje' ri ak'ala'ik', rumal chi kuya' kaq'axax ri alaj che' pa ri ulew kariqitaj wi k'a pa jun uk'olib'al chik, jacha' ta ne jun b'orxa, jun b'o'j, jun jasuch chik pa we chak wene' kaq'ipin ri uch'ek, uq'ab', uxaq, we kak'ulmatajik wa', man gas ta kuna' ri laj che' rumal k'o uwa'l, rumal chi

ri uk'exb'alil ri ik' katob'an che ri uk'iyem ri alaj che' xuquje sib'alaj nim katob'an wi le kariqitaj le ik' chech uya'ik uchuq'ab'.

Jairo Restrepo kub'ij: "ri uk'exb'alil ri ik' gas utz che uq'axaxik ri taq che' pa ri tikb'al are pa ri oxib' kisb'al taq q'ij rech ri ne'ik, k'a pa ri ak'ala'ik', xa' rumal chi are taq we q'ij ketob'an che jun utzalaj kik'iyem ri' che' pa taq ri tikb'al." (Restrepo, 2013: p.91).

◇ CHAK RE RI NAB'E JUNAB'

- K'ISB'AL UJOSQ'IXIK RI ULEW:

CHAK PWI' TIKOW CHE'	KAJ IK'	UK'EXB'AL LE Q'IJ	USOL UK'ASLEMAL LE CHE'	UQ'UJOL LE JUNAB'	UQ'UJOL	IK' RE LE JUNAB'	UK'EXB'AL RIB' LE IK'
Ujosq'ixik ri ulew	Nab'e	Nitz'upaq'ij: (21 re ukab'laj ik' k'a pa 20 rech ri urox ik') Suk'upaq'ij: (21 re urox ik' k'a pa 20 re uwaq ik')	Achi le che'	Saq'ij	- Tew - Q'aq'	Nab'e, ukab', urox xuquje' ukaj ik'	Rija'ik'

Ri chak pwi' ri ujosq'ixik ri ulew rumal ri tikow che', kb'an pa taq ri nab'e, ukab', urox xuquje' ukaj ik' re ri junab', jawje' kariqitaj wi ri tew xuquje' ri q'aq'. Pa taq we q'ij ri', ri itzel taq q'ayes man e ko taj, rumal chi man k'o ta jab',

rumal la' man gas ta k'o kichuq'ab', xuquje' are taq ri'j le ik', konojel le tiko'n ketuqa'rik man k'o ta kichuq'ab, rumal k'u la', are taq kechoy ri itzel taq q'ayes, man gas ta k'o kichuq'ab', no'jimal kkamik, rumal chi man k'o ta kichuq'ab'.

- UJUCH'IK, UB'ANIK JUL:

CHAK PWI' TIKOW CHE'	KAJ IK'	UK'EXB'AL LE Q'IJ	USOL UK'ASLEMAL LE CHE'	UQ'UJOL LE JUNAB'	UQ'UJOL	IK' RE LE JUNAB'	UK'EXB'AL RIB' LE IK'
Ujuch'ik xuquje' ub'anik jul	Nab'e	Suk'upaq'ij: (21 re urox ik' k'a pa 20 re uwaq ik')	Achi le che'	Saq'ij	- Q'aq'	Urox xuquje' ukaj ik'	Rija'ik'

Ri ujuch'ik xuquje' ri uk'otik ri jul are jun chak kajawatajik ub'anik are taq xb'antaj ri ujosq'ixik ri

ulew kb'an pa ri urox xuquje ukaj ik' re le junab', are taq k'o q'aq' xuquje' kariqitaj pa ri usol achi ri

che'. Ri jul rajawaxik k'o chik are taq kqaj ri nab'e taq jab', rumal che ri che taq wa' we q'ij ri' wa' ketob'an che ri alaj che' are taq chii kq'axaxik pa ri tiko'nijab'al, rumal ri uxe' ra' ruk'am b'i uja'. We kilik chi are k'o ri rija'ik', k'ate' ri' kab'an juch', ri k'otow jul sib'laj utz rumal che rumal chi man kek'iy ta itzel taq q'ayes chupam, chirij taq le jul, rumal k'u wa' ri juch' ruk' ri jul sib'alaj utz kub'ano rech katik ri alaj che'.

Neché ri we are taq kb'an ri juch' xuquje' ri jul pa q'alaj, kb'antajik knoj che ja', che ulew rumal ri alaj taq roqab'ala' kik'ow cho taq ri ulew, ri kub'ij wa' rajawaxik kkamulix ub'anik ri jul, rech kuya'o ktik le laj che'.

• UTIKIK CHE', WENE' UQ'AXAXIK PA RI TIKB'AL RECH RI CHE':

CHAK PWI' TIKOW CHE'	KAJ IK'	UK'EXB'AL LE Q'IJ	USOL UK'ASLEMAL LE CHE'	UQ'IJOL LE JUNAB'	UQ'IJOL	IK' RE LE JUNAB'	UK'EXB'AL RIB' LE IK'
Utikik che', wene' q'axaxik pa ri tikb'al rech ri che'	Ukab' xuquje' urox	Suk'upaq'ij: (21 re urox ik' k'a pa 20 re uwaq ik') Nimupaq'ij: (21 re uwaq ik' k'a pa 20 re ub'elej ik')	Ixoq le che'	Q'alaj	- Ch'aqalik	Uwaq, uwajxaq, ub'elej xuquje' ulaj ik'	Ne'ik xuquje' Ak'ala'ik'

Ri chak re utikik che', wene' uq'axaxik pa taq ri tiko'nijab'al, rajawaxik kb'an pa taq ri uro', uwaq, uwaq, uwajxaq, ub'elej xuquje' ulaj ik' rech le junab', uq'ijol ri jab', xuquje' are' usol ixoq le che' xuquje' are taq kk'exetaj ri suk'upaq'ij pa nimupaq'ij.

Ri ne'ik xuquje' ri ak'ala'ik' sib'alaj nim katob'an wi che ri chak pwi' ri tikow che', ri uq'axaxik, ajib'alaj katob'an che ri laj che' rech man k'o ta jewa' je ri' are taq kchapik, wene' kuriq k'ax ri uxe' ra', ri uch'ek, karaj ne are ri uxaq are taq kachapik rumal ri uq'axaxik.

Are taq ne' ri ik', ri uxe' ra' ri che' chajim rumal le uch'uqab'il rumal chi la' kariqitaj wi, pa ri ak'ala'ik' ri uchuq'ab' ktajin kapaqi' pa uwi' ri che', rumal wa' kuchajij ri uch'ek xuquje' ri uq'ab'

taq ri che'. Are taq kkiriq kib' ri ne'ik, ak'ala'ik' ruk' ri jab', sib'alaj kkito' kib' che ri qas utikikik ri che', xaq je ri kkiriq jun utzalaj tiko'nijik, qas knak'ii' kan ri uxe' ra' ri alaj taq che' are taq ketikik.

Restrepo kub'ij chi: "ri qas utzalaj uq'ijol che ub'anik we chak ri' are taq ronojel (ri uchuq'ab') kariqitaj pwi' ri che' pa ri uk'isb'alil ne'ik' k'a pa umajb'al ri nima'ik', xuquje' kq'atan pa ri ak'ala'ik'. We ya'talik kach'ik uq'ijol wa' we chak ri', sib'alaj kuqxa'nixik chi we chak ri' kab'an pa taq uk'isb'alil ri b'enaq'ijal, rech man kakiriq ta k'ax ri taq che', xuquje' rech kakikoj ri uchuq'ab' ri ik' pa taq ri nik'aj taq chaq'ab'il chik" (Restrepo, 2013; p.91).

• **UJOXK'IMIXIK LE UXE' CHE':**

CHAK PWI' TIKOW CHE'	KAJ IK'	UK'EXB'AL LE Q'IJ	USOL UK'ASLEMAL LE CHE'	UQ'IJOL LE JUNAB'	UQ'IJOL	IK' RE LE JUNAB'	UK'EXB'AL RIB' LE IK'
Ujoxk'imixik le ux'e le che'	Nab'e, ukab' xuquje' urox	Suk'upaq'ij, nimupaq'ij, q'eq qij xuquje' suk'upaq'ij	Ixoq xuquje' achi le che'	Saq'ij xuquje' q'alaj	- Ch'aqalik - Kyeqiq' - Tew - Q'aq'	Ronojel ri ik' re le junab'	Rija'ik'

Ri ujoxk'imixik rajawaxik kb'anik are taq xtikitaj ri che' pa ri tikb'al re, xuquje' rajawaxik amaq'el kab'anik che ri jun junab' rech qas utz ri uk'iyem ri laj che'. Ri ujoxk'imixik are ujosq'ixik ri uxe' taq ri laj che', rajawaxik nim ri ketekik jas ri retab'al ri raqan asarun kjosq'ixik, neche ri we ri itzel q'ayes sib'alaj nim, rajawaxik kanimarisax ri ketekik kjosq'ixik.

We are' kajawatajik are ujosq'ixik chi rij ri alaj che', rajawaxik kb'an wa' we chak ri' are taq k'o

ri rija'ik', rumal chi ri uchq'ab'il ri che' xa tajin kaxuli' loq, are taq kaqupix ri uch'ek ri itzel q'ayes kib'ano chi man kopan ta chi ri uchuq'ab' che ri uxe' ra', rumal wa' ri itz'el q'ayes, man katzalq'omij ta chi uloq, nojimal kkamik. Pa ri rija'ik', ri q'ayes xuquje' ri alaj taq che' ke'k'oji' che jun q'ijol jawje' ri man qas ta k'o kiwa'l, sib'alaj kkitzaq ri kichuq'ab'alil, q'ij wa ri qas utz chech kjosq'ixik we ri kajawaxik are resaxik ri itzel taq q'ayes rech kekam aninaq.

◇ **CHAK RECH RI UKAB' JUNAB'**

• **UKAMULIXIK UTIKIK RUMAL MAN XK'IY TAJ:**

CHAK PWI' TIKOW CHE'	KAJ IK'	UK'EXB'AL LE Q'IJ	USOL UK'ASLEMAL LE CHE'	UQ'IJOL LE JUNAB'	UQ'IJOL	IK' RE LE JUNAB'	UK'EXB'AL RIB' LE IK'
Ukamulixik utikik rumal man xk'iy taj	Ukab' xuquje' urox	Suk'upaq'ij: (21 re urox ik' k'a pa 20 re uwaq ik') Nimupaq'ij: (21 re uwaq ik' k'a pa 20 re ub'elej ik')	Ixoq le che'	Q'alaj	- Ch'aqalik	Uwaq, uwuq, uwajxaq, ub'elej xuquje' ulaj ik'	Ne'ik' xuquje' ak'ala'ik'

We ri taq che' man xekun taj xek'asi' are taq xetikik, rumal ri uchaqi'jal ri ulew, rumal ne' ri jun uk'exb'alil ri uwach ulew, rajawaxik kkumulix utikik ri alaj taq che' pa ri ukab' junab', ri chak pwi' ri tikow che'. Ri chak rajawaxik kb'an pa ri uro', uwaq, uwuq, uwajxaq, ub'elej xuquje' ulaj ik' re le junab', rumal che ri che taq wa' we ik' ri' k'o ri jab', are' k'o ri usol ixoq le che' xuquje' ri uk'exb'al ri q'ij are' ri suk'upaq'ij k'a pa nimupaq'ij.

Are taq k'o ri ne'ik' ri uxe'al ri che' chajim rumal ri uchuq'ab'il, pa ri ak'ala'ik', ri uchuq'ab'il tajin kaxuli' loq, rumal wa' kuchajij ri uch'ek xuquje' ri uq'ab' taq ri che'. Are taq kakiriq kib' ri ne'ik', ak'ala'ik' ruk' ri jab', sib'alaj ketob'an che ri utikik ri che' rumal chi aninaq kkik'am kik'u'x pa ri ulew.



◇ CHAK PWI' TAQ RI UK'IYIK RI CHE' XUQUJE' RI UCHAJIXIK PA RI NO'JIB'AL

- UB'ANIK, RILIXIK ALAJ TAQ Q'ATEB'AL RECH Q'AQ':

CHAK PWI' TIKOW CHE'	KAJ IK'	UK'EXB'AL LE Q'UJ	USOL UK'ASLEMAL LE CHE'	UQ'UJOL LE JUNAB'	UQ'UJOL	IK' RE LE JUNAB'	UK'EXB'AL RIB' LE IK'
Kilik taq ri awaj (kesaxik are taq k'a esaqmo'l, wine' erecha'q na)	Nab'e, ukab' xuquje' urox	Suk'upaq'ij, nimupaq'ij, q'eq qij xuquje' suk'upaq'ij	Ixoq xuquje' achi le che'	Saq'ij xuquje' q'alaj	- Ch'aqalik - Kyeqiq' - Tew - Q'aq'	Konojel ri ik' re le junab'	Ne'ik' xuquje' ak'ala'ik'

Ri ub'anik, rilixik alaj taq q'ateb'al q'aq', are jun chak re si'janik xuquje' re ujosq'ixik ri ulew, rech we k'o q'aq', man kanimar taj, rajawaxik kb'an amaq'el chech ri jun junab' neche ri are utz' are taq k'o ri rija'ik'.

Pa ri rija'ik', ri kichuq'ab' ri alaj taq che' xa tajin kqaj loq, xuquje' ruk' ri ujosq'ixik, ri uq'atexik q'aq' kaqatex ronojel ri kya'ow uchuq'ab' ri uxe'al taq ri che', xaq je ri' kya' uk'iyisax ru

utuqrik taq ri che', rumal k'u re wa' konojel taq ri tiko'n nojimal kek'iyik, xuquje' ronojel ri uxaq taq katajik kkitzaq taq ri kija'l, man qas ta k'o kichuq'ab', kok chaqi'jarik chikech, are k'u chi ri' wa' ri qas qas utz uq'atik choch ri ulew, kab'an ri q'ateb'al q'aq' rumal che ri ruk' jub'iq' k'o k'aya'tajik. Are k'u we man kab'an wa wew chak ri', ri uxaq taq ri che' sib'alaj echaqi'j man k'ax ta kek'atatajik.

- KILIK TAQ RI AWAJ (KESAXIK ARE TAQ K'A ESAQMO'L, WINE' ERECHA'Q NA):

CHAK PWI' TIKOW CHE'	KAJ IK'	UK'EXB'AL LE Q'UJ	USOL UK'ASLEMAL LE CHE'	UQ'UJOL LE JUNAB'	UQ'UJOL	IK' RE LE JUNAB'	UK'EXB'AL RIB' LE IK'
Ub'anik, rilixik alaj taq q'ateb'al rech q'aq'	Nab'e, ukab' xuquje' urox	Suk'upaq'ij, nimupaq'ij, q'eq qij xuquje' suk'upaq'ij	Ixoq xuquje' achi le che'	Saq'ij xuquje' q'alaj	- Ch'aqalik - Kyeqiq' - Tew - Q'aq'	Ronojel ri ik' re le junab'	Rija'ik'

Ri kilik taq ri itzel taq awaj, ri kesaxik are taq k'a esaqmo'l na, wine' erecha'q na, are jun chak wa pwi' taq ri tikow che' ri rajawaxik amaq'el kab'anik che jun junab', neche ri are utz are taq k'o ri ne'ik', rumal chi ri ixjut k'a saqmo'l na, wine' recha'q na, rumal wa' man k'ax taj kekamisaxik. We ri taq ixjut kekunik kek'iy jub'iq', ruk' ri ak'ala'ik' xuquje' ri nima'ik', ri ixjut kuriq uchuq'ab' are taq kutij ri uxe'al ri che', rumal k'u wa' sib'alaj k'ax kikamisaxik.

Rech ke'ilik, ke'saxik, kanitz'arisax kiwach ri itzel taq awaj, rajawaxik kilix ri uk'exb'al rib' ri ik'. Rumal chi are taq kek'iy ri taq ixut, are rumal chi man k'o ta jachin kekamisanik, rumal la' rajawaxik rilik wa' we jun k'ulmatajem ri'.

Are taq kak'iy ri uchuq'ab' ri che' pa taq ri uch'ek, uxaq, ukotz'i'jal xuquje' ri uwachib'al, sib'alaj kakiya' kib' chike ri awaj xuquje' man k'ax taj kakiriq yab'il.

• **UJOSQ'IXIK RI CHE' CHIKECH RI ITZEL TAQ Q'AYES, ITZEL TAQ AWAJ:**

CHAK PWI' TIKOW CHE'	KAJ IK'	UK'EXB'AL LE Q'IJ	USOL UK'ASLEMAL LE CHE'	UQ'IJOL LE JUNAB'	UQ'IJOL	IK' RE LE JUNAB'	UK'EXB'AL RIB' LE IK'
Ujosq'ixik ri che' chikech ri itzel taq q'ayes, itzel taq awaj	Nab'e, ukab' xuquje' urox	Suk'upaq'ij, nimupaq'ij, q'eq qij xuquje' suk'upaq'ij	Ixoq xuquje' achi le che'	Saq'ij xuquje' q'alaj	- Ch'aqalik - Kyeqiq' - Tew - Q'aq'	Konojel ri ik' re le junab'	Rija'ik'

Ri chak pwi' ri tikow che' rech ri ujosq'ixik taq ri che' chikech ri itzel taq q'ayes, itzel taq awaj are jun chak rajawaxik ktajinik kb'an chech ri jun junab', neche ri sib'alaj utz are taq k'o ri rija'ik', rumal che ri xa kaxuli' loq ri uchuq'ab'il, ri uxe'al ri taq man qas ta k'o uchuq'abil, kub'ano chi ri

uk'iyem ri che' sib'alaj no'jimal, rumal rech wa' man kuchuq'ab'ej taj, kakamik xuquje' le taq tiko'n, le taq che' sib'alaj man k'o ta kiwa'l, k'o chaqi'jal chikech, man k'o ta kichuq'ab', rumal wa' are utz we taq q'ij we kajawatajik, kekamisax ri itzel taq awaj wine' kekunaxik ri taq che'.

• **UCHOYIK TAQ RI Q'AYES (KESAX KONOJEL RI ITZEL TAQ Q'AYES):**

CHAK PWI' TIKOW CHE'	KAJ IK'	UK'EXB'AL LE Q'IJ	USOL UK'ASLEMAL LE CHE'	UQ'IJOL LE JUNAB'	UQ'IJOL	IK' RE LE JUNAB'	UK'EXB'AL RIB' LE IK'
Unak'tikik ri che'	Nab'e xuquje' urox	Nitz'upaq'ij: (21 rech ukab'laj ik' k'a pa 20 re urox ik') Suk'upaq'ij: (21 re ub'elej ik' k'a pa 20 re ukab'laj ik')	Achi le che'	Saq'ij	- Tew - Kyeqiq'	Nab'e, ukab', urox, uju'laj xuquje' ukab'laj ik' re le junab'	Ak'ala'ik'

Ri chak re uchoyik taq ri q'ayes rech kesax konojel ri itzel taq q'ayes, q'ayes ri man kkiya' ta b'e che kik'iyik ri tiko'n, are jun chak wa' ri rajwaxik kb'an amaq'el che ri jun junab', neche ri are' utz are taq k'o ri rija'ik', xa rumal che ri uchuq'ab'il xa kaxuli'k, xaq je ri' man qas ta k'o uchuq'ab' ri uxe' ra' ri che', ri kub'an wa' chi ri uxe' ri itzel

q'ayes man qas utz uk'iyem kapetik, no'jimal kkamik, xuquje' ri etiko'n kuk' ri eche' che taq wa' we q'ij ri' man qas ta k'o ri kiwa'l, ek'o pa ri chaqi'jal, etuqa'rinaq. Che k'u taq wa' we q'ij ri' ri qas ya'atalik kejosq'ixik we ri kajawaxik are kesax ri itzel taq q'ayes.

• **UNAK'TIKIK RI CHE' (NO'JIB'AL PWI' LE UTIKIK TAQ LE CHE'):**

CHAK PWI' TIKOW CHE'	KAJ IK'	UK'EXB'AL LE Q'IJ	USOL UK'ASLEMAL LE CHE'	UQ'IJOL LE JUNAB'	UQ'IJOL	IK' RE LE JUNAB'	UK'EXB'AL RIB' LE IK'
Uchoyik taq ri q'ayes (kesax konojel ri itzel taq q'ayes)	Nab'e, ukab' xuquje' urox	Suk'upaq'ij, nimupaq'ij, q'eq qij xuquje' suk'upaq'ij	Ixoq xuquje' achi le che'	Saq'ij xuquje' q'alaj	- Ch'aqalik - Kyeqiq' - Tew - Q'aq'	Konojel ri ik' re le junab'	Rija'ik'



Ri unak'tikik che' (rech kuko ri Sistema Agroforestales SAF) rajawaxik kab'an pa taq ri nab'e, ukab', urox, uju'laj xuquje' ukab'laj ik', jawje' kariqitaj kyeqiq' xuquje' tew, pa ri usol achi re ri che'. Ri chak kb'anik are taq kk'is utzukuxik ri uwach ri che', neche ri kb'anik are taq maja' kpe ri uxaq, ukotz'i'jal.

Ri ak'ala'ik' sib'alaj utz che taq unak'tikik che', rumal che ri che taq wa' we q'ij ri' kapaqi' ri

uchuq'ab'il ri che', xuquje' are taq kqupix ri uch'ek, kpoq' aninaqil ri uq'ab', xuquje' aninaq kakinak' kib' ri che'.

Ri ak'ala'ik' kkunik kukunaj ri che' are taq ksokaxik, xuquje' ktob'an rech keyukan aninaqil, ruk' wa' man kkiriq ta jule' yab'il ri taq che', rumal wa' sib'alaj utz kb'an we chak chech taq we q'ij.

◇ CHAK PWI' LE TIKOW CHE'

- UJOTOYIXIK, USI'JAXIK RI EYAWAB' TAQ CHE':

CHAK PWI' TIKOW CHE'	KAJ IK'	UK'EXB'AL LE Q'IJ	USOL UK'ASLEMAL LE CHE'	UQ'IJOL LE JUNAB'	UQ'IJOL	IK' RE LE JUNAB'	UK'EXB'AL RIB' LE IK'
Ujotoyixik, usi'jaxik ri eyawab' taq che'	Nab'e, ukab' xuquje' urox	Suk'upaq'ij, nimupaq'ij, q'eq qij xuquje' suk'upaq'ij	Ixoq xuquje' achi le che'	Saq'ij xuquje' q'alaj	- Ch'aqalik - Kyeqiq' - Tew - Q'aq'	Konojel ri ik' re le junab'	Rija'ik'

Ri ujotoyixik, usi'jaxik ri eyawab' taq che', are jun chak pwi' ri tikow che ri rajawaxik kb'an amaq'el che ri jun junab', rumal chi ri che' kab'antajik xaq k'ate' kyowajik. Ri utob'anik ri rija'ik', jacha kub'ij ri tata' Jairo Restrepo, ri chak rech ri ujotoyixik, usi'jaxik, ujosq'ixik ri yawab' taq che' are kb'anik are taq k'o ri rija'ik' (...), xaq je wa' kq'atex ri

uq'ayik xuquje' aninaqil keyukanik. (Restrepo, 2013; p. 82).

Pa ri rija'ik', are taq kejotoyixik, kesi'jaxik le yowab' taq che', kuya'o kekojik, ri kequpixik, chech si' ri kokisax pa ri ja.

- UJOTOYIXIK RECH UTZ UPETIK:

CHAK PWI' TIKOW CHE'	KAJ IK'	UK'EXB'AL LE Q'IJ	USOL UK'ASLEMAL LE CHE'	UQ'IJOL LE JUNAB'	UQ'IJOL	IK' RE LE JUNAB'	UK'EXB'AL RIB' LE IK'
Ujotoyixik rech utz upetik	Nab'e, ukab' xuquje' urox	Suk'upaq'ij, nimupaq'ij, q'eq qij xuquje' suk'upaq'ij	Ixoq xuquje' achi le che'	Saq'ij xuquje' q'alaj	- Ch'aqalik - Kyeqiq' - Tew - Q'aq'	Konojel ri ik' re le junab'	Ne'ik' xuquje' ak'ala'ik'

Ri ujotoyixik rech utz upetik le che' are jun chak kb'an kuk' taq le che' kkoj che taq tz'alam, rumal chi are ktzukux chi man k'o ta q'ab' pa taq ri che', ri chak rajawaxik amaq'el kb'anik, neche ri are

utz are taq ri che' tajin kak'iyik. Rajawaxik man kb'an ta we chak are taq k'o pa ri usol ixoq le che', are taq kape ri ukotz'i'jal wine are taq kape ri uwach.

Sib'alaj nim wa' ri katob' wi ri ik' chech ub'anik taq wa' we chak ri', kuqxa'nixik chi ri chak kb'anik are taq k'o ri ak'ala'ik', jacha' kub'ij ri tata' Restrepo (2013), "Ri ugotoyixik rech utz upetik: chike ri k'ak' taq che', rajawaxik kb'anik are taq k'o ri ne'ik' xuquje'ri ak'ala'ik', rumal chi man k'ax ta ik', are taq k'o ri tew, q'aq' xuquje'

kyeqiq', pa ri usol achi le che', ke'tz'ukik... We qas rajawaxik kb'an we taq jotoyinik, kuqxa'nixik chi are utz kb'an are taq k'o ri ne'ik', rech xaq je' wa' man kya ta b'e che ri aninaq kik'iyen ri tiko'n..." (Restrepo, 2013; p. 82, 83 y 91).

• **UJOTOYIXIK RECH UTZ UK'IYIK:**

CHAK PWI' TIKOW CHE'	KAJ IK'	UK'EXB'AL LE Q'IJ	USOL UK'ASLEMAL LE CHE'	UQ'IJOL LE JUNAB'	UQ'IJOL	IK' RE LE JUNAB'	UK'EXB'AL RIB' LE IK'
Ugotoyixik rech utz uk'iyik	Nab'e, ukab' xuquje' urox	Suk'upaq'ij, nimupaq'ij, q'eq qij xuquje' suk'upaq'ij	Ixoq xuquje' achi le che'	Saq'ij xuquje' q'alaj	- Ch'aqalik - Kyeqiq' - Tew - Q'aq'	Konojel ri ik' re le junab'	Ak'ala'ik' xuquje' nima'ik'

Ri ugotoyixik rech utz uk'iyik ri che' are jun chak pwi' ri tikow che' are jun chak ri kb'anik rech utz kak'iy ri che', kuya' kb'an amaq'el che ri jun junab' neche ri are qas rajawaxik kb'anik are taq ri che' tajin kk'iyik. Nim katob' wi ri ik' chech wa' rumal ri' ri chak are utz kb'an are taq k'o ri ak'ala'ik' xuquje' ri nima'ik'. Ri tat Restrepo (2013), kub'ij "Ri uk'exb'al rib' ri ik' qas utz chech taq ri ugotoyixik, usi'jaxik rech qas utz upetik taq ri uq'ab' ri che' rech kakoj che ri nak'b'al

utitik nik'aj chik are' qas utz are taq kariqitaj ri uchuqab' ajsik re le che' ri ak'ala'ik' xuquje' ri nima'ik'." (Restrepo, 2013; p.110).

Rajawaxik ub'anik we chak ri' xa rumal chi ktob'an che uchajixik ri taq k'iche'laj, xuquje' ktob'anik rumal k'o pa ri usol ixoq le che', are taq k'o ukotz'i'jal xuquje' kechaq'aj ri uwach.

Nim katob'an wi le ik' are taq ri'j, ronojel ri kesax che ri che' kuya' kkoj che si'.

• **USI'JAXIK (CHECH AQAN XUQUJE' CHECH SI'):**

CHAK PWI' TIKOW CHE'	KAJ IK'	UK'EXB'AL LE Q'IJ	USOL UK'ASLEMAL LE CHE'	UQ'IJOL LE JUNAB'	UQ'IJOL	IK' RE LE JUNAB'	UK'EXB'AL RIB' LE IK'
Usi'jaxik (chec aqan xuquje' chech si')	Nab'e xuquje' urox	Nitz'upaq'ij: (21 re ukab'laj ik' k'a pa 20 re urox ik') Suk'upaq'ij: (21 re ub'elej ik' k'a pa 20 re ukab'laj ik')	Achi le che'	Saq'ij	- Tew - Q'aq' - Kyeqiq'	Nab'e, ukab', urox, uju'laj xuquje' ukab'laj ik' r le junab'	Nima'ik'

Ri chak pwi' ri tikow che, ri usi'jaxik, sib'alaj rajawaxik rech utz kak'iy, unimarik ri che', xuquje' kajawataj rech ri taq k'iche'laj k'o kiche' ri qas k'o kupatanij chech taq ri rajawaxik kakojik. Ri chak ri' kb'an pa ri nab'e, ukab', urox, uju'laj xuquje'

ukab'laj uq'ijol, tew, q'aq' kyeqiq', xuquje' are taq achi' le che'.

Are taq nima'ik' le ik' sib'alaj utz chech are taq kasi'jax taq le che' xa rumal che ri are qas utz ub'anik le kesax chech, sib'alaj ko, naj kuq'i'o we

kokisax chech si': ri q'aq' sib'alaj utz kub'an pa sib'alaj utz kelik.
 ri b'amb'al wa xuquje' kumiq'inisaj ri upa ja. We
 kakoj che aqan, ri uq'ab' taq ri che' ri kesaxik,

◇ UTZ UKOJIK RI CHE'

• UTZ UKOJIK CHECH TZ'ALAM XUQUJE' CHECH CHE':

CHAK PWI' TIKOW CHE'	KAJ IK'	UK'EXB'AL LE Q'UJ	USOL UK'ASLEMAL LE CHE'	UQ'UJOL LE JUNAB'	UQ'UJOL	IK' RE LE JUNAB'	UK'EXB'AL RIB' LE IK'
Utz ukojk chech tz'alam xuquje' chech che'	Nab'e xuquje' urox	Suk'upaq'ij: (21 re ub'elej ik' k'a pa 20 re ukab'laj ik') Nitz'upaq'ij: (21 re ukab'laj ik' k'a pa 20 re urox ik')	Achi le che'	Saq'ij	- Kyeqiq' - Tew - Q'aq'	Nab'e, ukab', urox, uju'laj xuquje' ukab'laj ik' r le junab'	Nima'ik'

Ri utz ukojik le che' sib'alaj kajawataj chike ri ewinaq, rumal chi ri che' kuya' kek'iy chi jun mul, utz kakoj chech ri si' xuquje' chech tz'alam rumal che ri chi k'o wi pa ri kino'jib'al ri ajwaralik winaq. Ri chak rajawaxik kb'an pa ri nab'e, ukab', urox, uju'laj xuquje' ukab'laj ik', are taq k'o tew xuquje' q'aq', pa ri usol achi le che'. Kaye'x na chi kaq'atan ri q'alaj rech kuya' kb'an wa' we chak ri', xuquje' rumal chi tajin kak'is ri uwach le che', kuya' katzukux ri ija'.

Are taq k'o ri nima'ik' are qas sib'alaj utz wa' che utz ukojik tal le che', jacha' kkitab'ij ri ajwaralik winaq chi pa taq we q'ij ri' are qas utz keriqitaj taq le che', sib'alaj eko xuquje' naj kkiq'io, we kakoj che si': ri q'aq', ruk' ri rachaq q'aq' sib'alaj utz kub'an pa ri b'amb'al wa xuquje' kumiq'inisaj ri upam ri ja. We kakoj che tz'alam, ri che' ri kesaxik sib'alaj nim uchuq'ab' xuquje' man aninaq taj kuriq uyab' kumal ri awaj wine' kaya' ne kan cho le q'ij saq.

◇ ALAJ SAQ'IJ

CHAK PWI' TIKOW CHE'	KAJ IK'	UK'EXB'AL LE Q'UJ	USOL UK'ASLEMAL LE CHE'	UQ'UJOL LE JUNAB'	UQ'UJOL	IK' RE LE JUNAB'	UK'EXB'AL RIB' LE IK'
Nab'e alaj saq'ij	Ukab'	Nimupaq'ij: (21 re uwaq ik' k'a pa 20 re ub'elej ik')	Ixoq le che'	Q'alaj	- Ch'aqalik	Uwuq ik'	Ak'ala'ik' xuquje' nima'ik'
Ukab' alaj saq'ij	Ukab'	Nimupaq'ij: (21 re uwaq ik' k'a pa 20 re ub'elej ik')	Ixoq le che'	Q'alaj	- Ch'aqalik	Uwajxaq ik'	Ak'ala'ik' xuquje' nima'ik'

Kb'ix alaq saq'ij chech are taq ktani' ri jab', nojimal kub'an jun alaj saq'ij man qas ta naj kuq'io, wa' we ri' kk'ulmatajik junab' chi junab'. Pa taq nik'aj k'olib'al sib'alaj q'alaj wa' we ri', pa nik'aj chik man qas ta kuk'utu. Xa k'u ne chi utz wi kab'an rilik are taq kak'ulmantaj wa' xa rumal rech ukojik ronojel ri kape pa ri k'iche'laj, rumal

che ri are wa' are taq kachaq'aj ri uwach ri che', kuya'o katzukuxik. Ri nab'e alaj saq'ij kaya'taj pa ri ukab', ri urox wuqq'ij re ri uwuq ik', ri ukab' alaj saq'ij kaya'taj pa ri ukab' wine pa ri urox wuqq'ij re ri uwajxaq ik'. Ri chak pwi' tikow che' kuya'o kab'anik neche ri rajawaxik kajilax ri q'ij xuquje' kilix ri uk'exb'al rib' ri ik'.



3. WUJ XSOLIXIK

Ak'abal, H. (2016). Paráfrasis del Popol Wuj. Guatemala: Editorial Maya' Wuj.

Ibargüen, L. y Chapela, G. (2006). Conocimiento tradicional forestal en México. En Biodiversidad y conocimientos tradicional en la sociedad rural; Entre el bien común y la propiedad privada. México. Centro de Estudios para el Desarrollo Rural Sustentable y la Soberanía Alimentaria, CEDRSSA.

Instituto Nacional de Bosques. (2011). Parámetros de evaluación de los proyectos para su certificación. Programa de incentivos forestales para poseedores de pequeñas extensiones de tierra de vocación forestal o agroforestal, PINPEP. Guatemala.

Instituto Nacional de Bosques. (2014). Estrategia Institucional para la Atención de los Pueblos Indígenas en el Sector Forestal de Guatemala, Guatemala.

Instituto Nacional de Bosques. (2014). Lineamientos técnicos de manejo forestal. Guatemala.

Instituto Nacional de Bosques. (2016). Manual de Criterios y Parámetros -PROBOSQUE-. Guatemala.

Naciones Unidas. (2016). La riqueza de los pueblos indígenas. Recuperado de <http://www.un.org/es/events/indigenousday/index.shtml>

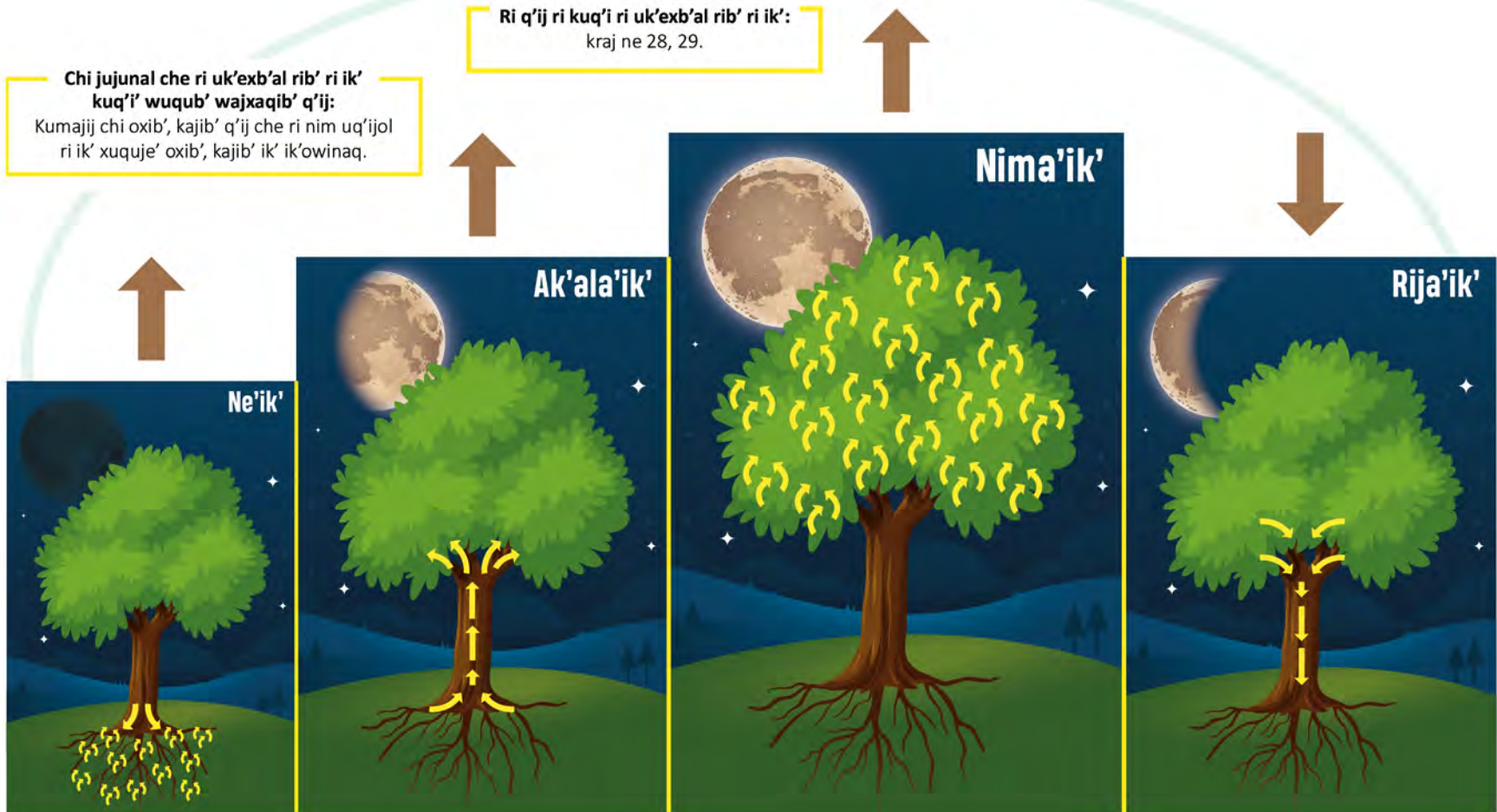
Naciones Unidas. (2015). Protección de 400 millones de hectáreas de bosques por los pueblos indígenas Recuperado de <https://unfccc.int/es/news/proteccion-de-400-millones-de-hectareas-de-bosques-por-los-pueblos-indigenas>

Restrepo, J. (2013). La Luna "El sol nocturno en los trópicos y su influencia en la agricultura". Colombia. Impresora Feriva.





RI USALAB'EM RI UCHUQ'AB' RI CHE' JE' JACHA' RI UK'EXB'AL RIB' LE IK'





Q'atb'al taj pwi' ri H'iche'laj
We k'o H'iche'laj, k'o H'aslemal







Árbol de la vida.
Pag. 26, Códice de Dresde

"Che ri kich'ab'al ri ojer taq che'
Kinta wi re kech ri wati't numam
Enajtir taq ilonel
Si rachik' k'o chi uxe' ra'."

Humberto Ak'abal



www.inab.gob.gt

    inab Guatemala

